



NEW ZEALAND QUALIFICATIONS AUTHORITY
MANA TOHU MĀTAURANGA O AOTEAROA

Māori Qualifications Services

~ Presentation to
**Career Pathways for
Māori Community Health
Workers**

Te Manukanuka o Hoturoa Marae
27 August 2010



~ Hei Kupu Whakataki - Introduction

*“Te manu ka kai i te miro,
nōna te ngāhere*

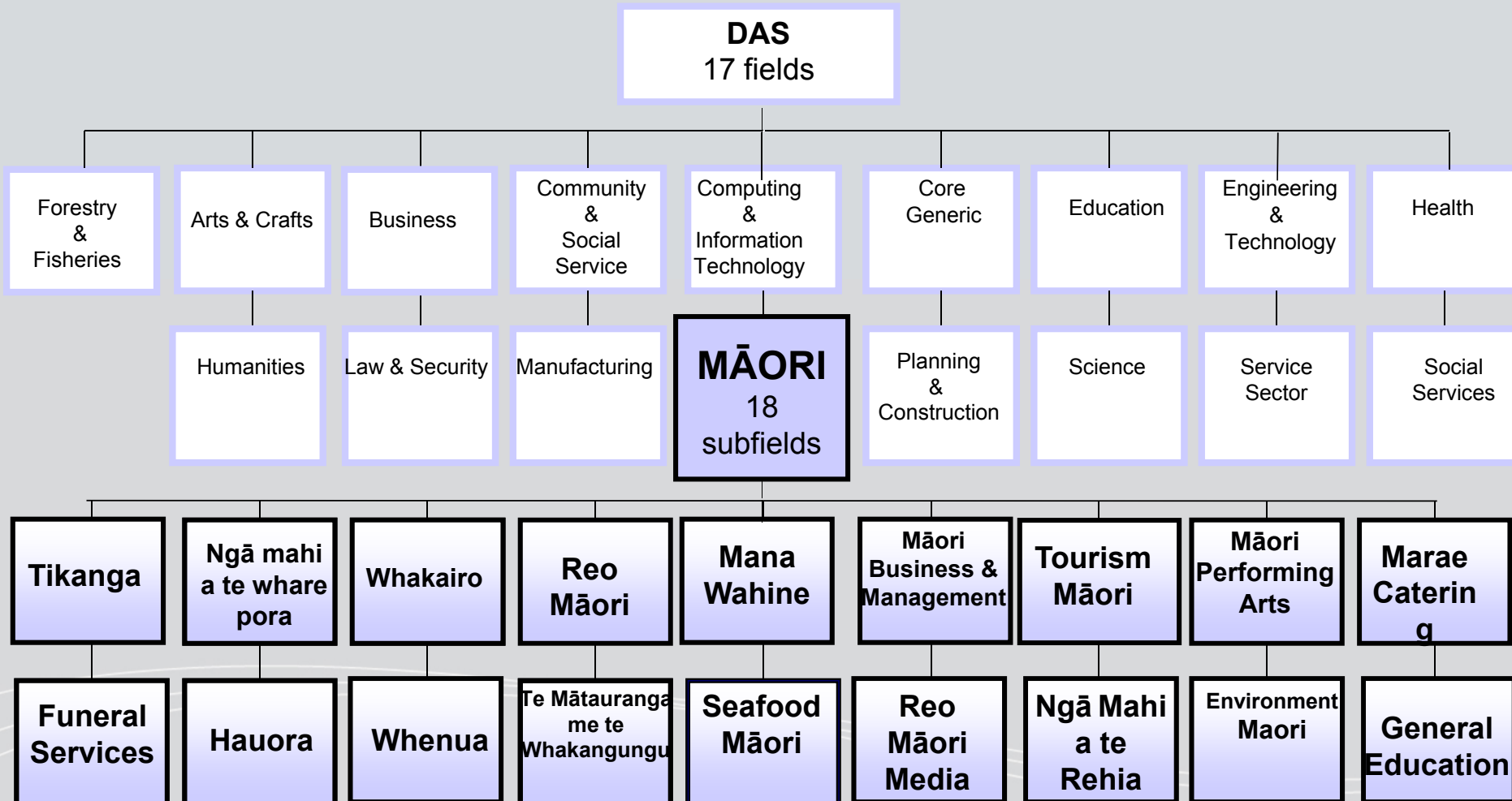


*“Te manu ka kai i te mātauranga,
nōna te ao”*

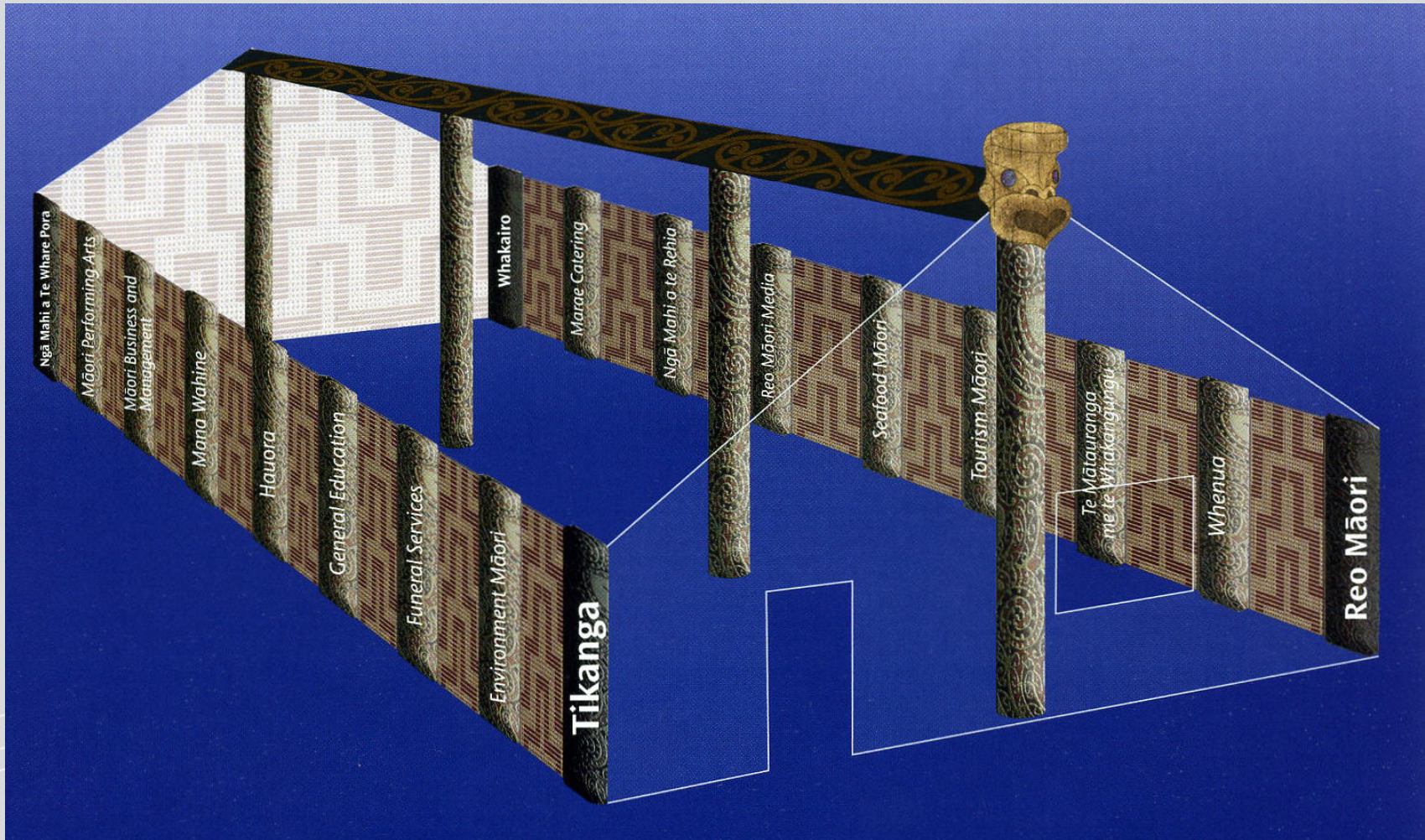
Introducing the New Zealand Qualifications Framework (NZQF)

- The NZQF has been established as the single definitive repository for nationally approved, quality assured qualifications in New Zealand.
- The NZQF replaces both the New Zealand Register of Quality Assured Qualifications (which many knew through the KiwiQuals website) and the National Qualifications Framework (the NQF). All existing qualifications from the Register and the NQF have been transferred to the NZQF.
- Assessment standards, which were part of the National Qualifications Framework, are now located in the new Directory of Assessment Standards (DAS).

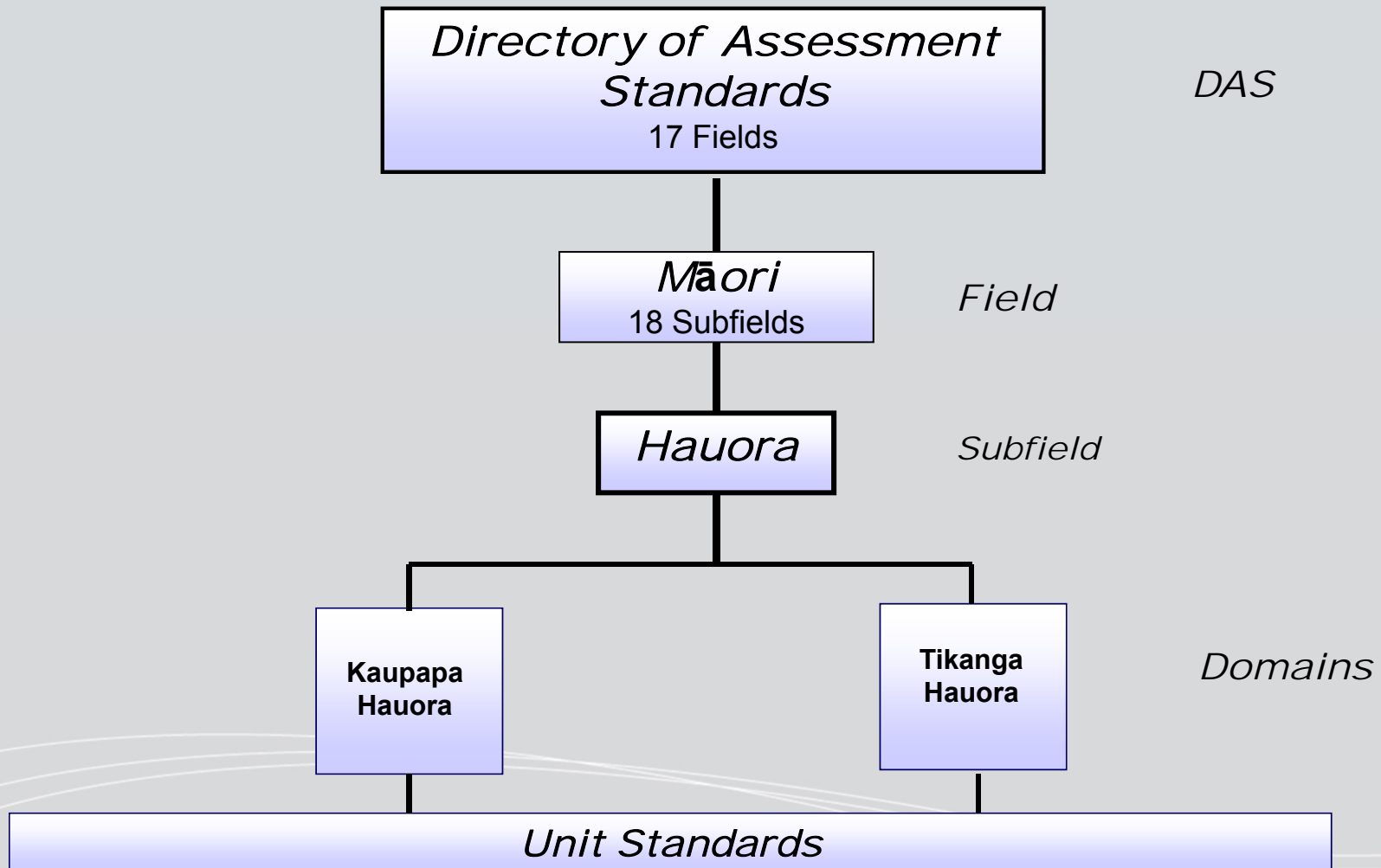
Te Purongo mo ngā Paerewa Aromatawai - DAS



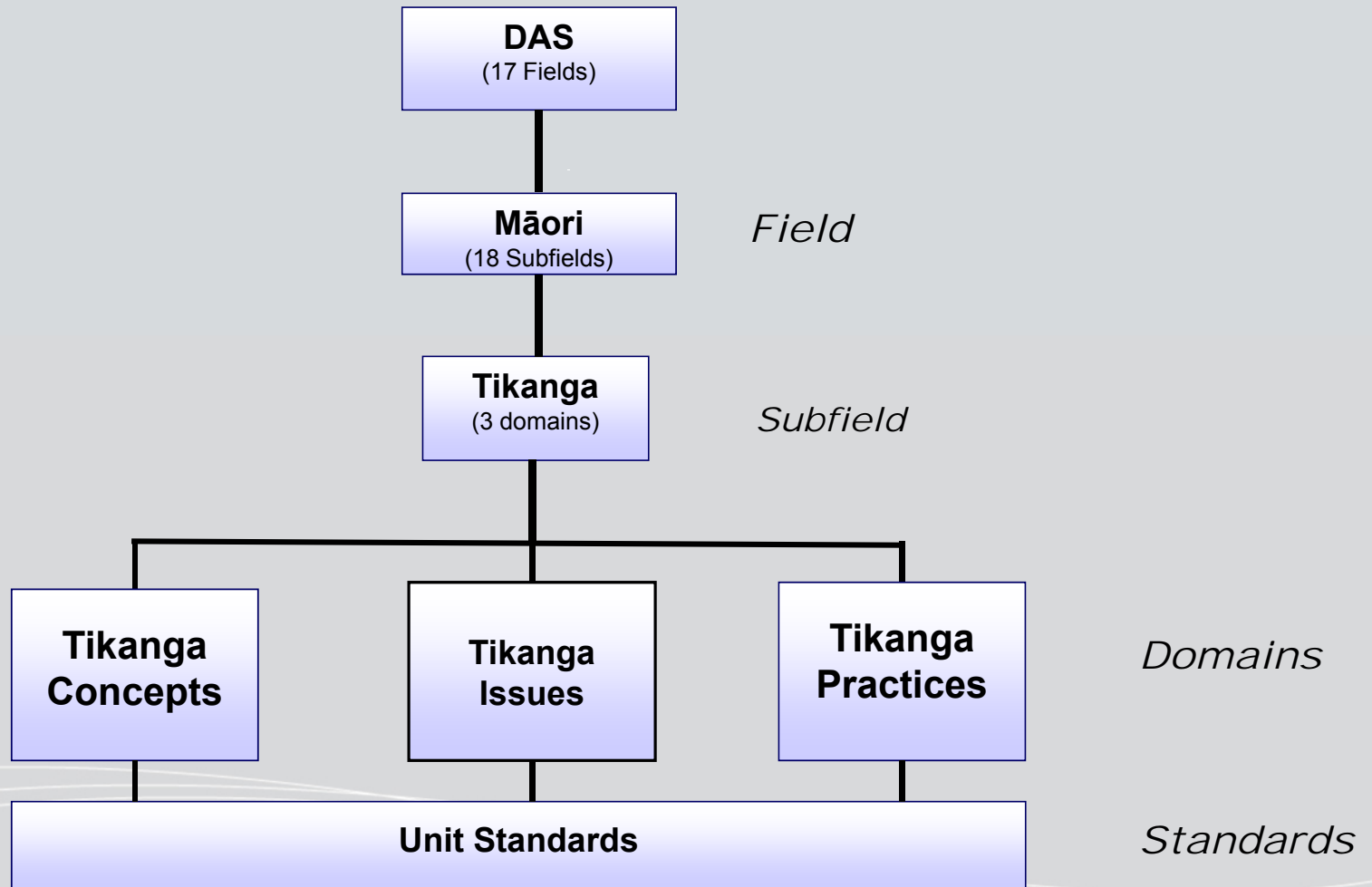
Te Marau Māori – Field Māori



Hauora – Subfield



Tikanga - Subfield



Ngā Mahi Matua a MQS – Core Business

- **Develop** unit standards, qualifications and assessment resources.
- **Review** unit standards, qualifications and assessment resources.
- **Promote** the uptake of field Māori.

Whakaruruhau

- Te Hunga Matatau – expert panellists
- Iwi representation
- Ensure the integrity of the unit standards and qualifications is maintained
- Hui with MQS to review or develop unit standards and qualifications
- Endorse field Māori unit standards & qualifications
- Chairs of each Whakaruruhau meet twice a year.

Selection criteria

- Relevance to position and can contribute to Whakaruruhau
- Open communication, collaborative, problem solving, teamwork
- Experience incorporating te reo into strategic focus of Whakaruruhau – te reo, kawa, tikanga
- Essential skills in field Māori subject, industry skills etc
- Knowledge, understanding, promotion of unit standards and assessment, delivery and training
- Knowledge and understanding of the DAS (directory of assessment standards) and NZQF (New Zealand Qualifications Framework) for unit standards and Qualifications development and review.

Representation from:

- Industry bodies
- Wānanga
- AMPTEE
- Runanga or Iwi organisations
- Agencies and Ministries
- Kaiwhakahaere within organisations
- Teaching practitioners
- Administrators
- National Moderators

What are Standards?

A standard is an assessment tool that describes
what must be done and ***how well***

Achievement standards

New Zealand
curriculum-based
standards

Unit standards

Other Standards
(ITO, National,
Field Māori)

What is a Qualification?

Recognition of skills and knowledge that meet nationally endorsed unit standards.

National Certificate

National Diploma

National Degrees

Hauora Qualifications

- National Certificate in Hauora (Māori health)
- Level 4 92 credits

- National Diploma in Hauora (Māori health)
- Level 6 120 credits

What is an AMAP

- Accreditation and Moderation Actions Plan
- Outlines the specific criteria for consent to assess against standards and national external moderation
- Sector standard requirements to deliver or assess against unit standards
- Moderation process

AMAP 165 – Hauora unit standards

- Development and Evaluation of Teaching Programme
- Staff selection, Appraisal and Development
- Student guidance/Support systems
- Assessment

Packaging Standards into Qualifications



Certificate

- Used in a wide range of contexts at levels 1-7
- Prepare candidates for both employment and further education and training

Credit requirements:

- a minimum of 40 credits at levels 1–7

Diploma

- prepare learners for self-directed application of skills and knowledge
- recognise capacity for initiative and judgement across a broad range of educational and vocational areas
- recognise initiative and judgement in technical, professional, and/or management roles
- builds on prior qualifications or experience.

Credit requirements

- registered at levels 5–7
- have 120 credits at **level 4 or above**

NZQA website – Course approval and accreditation

- <http://www.nzqa.govt.nz/providers-partners/registration-and-accreditation/course-approval-and-accreditation/>

Ngā Tohu Pōkaitahi - National Certificates

The following certificates are **currently** registered in Field Māori:

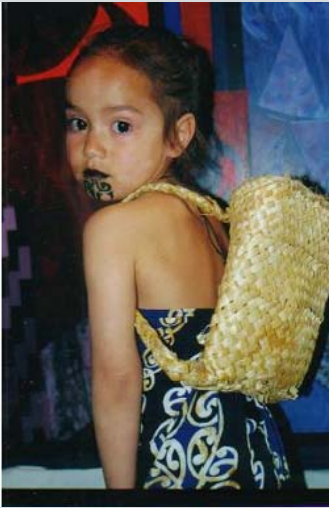
- Te Waharoa – L2
- **Hauora** – L4
- Māori Business and Management – L4
- Māori Performing Arts – L4
- Reo Māori Media – L4
- Whakairo (Tuturu) – L4
- Ngā Mahi a te Whare Pora – L2, L4
- Seafood Māori (Customary Fishing) – L3, L4 (x 3)
- Te Matauranga Māori me te Whakangungu – L4, L5
- Governance of Māori Authorities – L3
- Te Ngutu Awa – L4
- Marae Catering – L2
- Reo Māori – L4
- Wāhi Tapu – L4
- Tourism Māori – L3, L4
- Māori Environmental Practices – L4

Ngā Tohu Pōkairua - National Diplomas

The following diplomas are **currently** registered in Field Māori:

- **Hauora** – L5
- Māori Business and Management – L5
- Māori Performing Arts – L6
- Ngā Mahi a te Whare Pora – L6
- Reo Māori – L5, L6
- Reo Māori Media – L5
- Te Mātauranga Māori me te Whakangungu – L5
- Tourism Māori – L5
- Whakairo – L5, L6
- Māori Environmental Management – L5

Hei Whakakapi - Summary



***“He ao te rangi ka uhia,
He kai te whare wānanga ka tōroa.”***

*“As the clouds deck the heaven,
so food prolongs the wānanga.”*

